

Product Specification	
Model	VE600W
Optical Spec.	
Brightness	7000lm
Display Technology	3LCD
Contract Ratio	5,000,000:1(FOFO)
Resolution	XGA (1280 x 800)
Light Source	Laser Diode
Light Source Lifetime	20,000 Hrs
Aspect Ratio	16:10(Standard) / 4:3 (Compatible)
Projection Lens	
Zoom/Focus	Manual
Zoom Ratio	1.6xoptics
Throw Ratio	1.24-2.07:1
Screen Size	30"~300"
Lens Shift V	+55%~0 (Manual)
Lens Shift H	±26% (Manual)
Generic Spec.	
Speaker	1*16W
Noise	ECO2: 27dB/ Normal: 37dB
Scanning Frequency	Hsync Frequency 15~100KHz / Vsync Frequency 24~85Hz
Computer Signal Input	VGA, SVGA, XGA, SXGA, WXGA, UXGA, WUXGA, 4K@30Hz
Video Compatibility	PAL, SECAM, NTSC 4.43, PAL-M, PAL-N, 480i, 480p, 576i, 576p, 720p, 1080p and 1080i
Power Requirements	100~240V @ 50/60Hz
Power Consumption	350W @Normal/ 270W @ECO1/ 230W @ECO2
ECO Standby Mode Power	<0.5W
Network standby Power Consumption	<2W
OSD(Languages)	26 languages: English, German, French, Italian, Spanish, Polish, Swedish, Dutch, Portuguese,
Terminal(I/O port)	
Input Terminals	VGA x1, Audio in(mini jack, 3.5m) x1, Audio in(mini jack, 3.5m) x1, HDMI x2, USB-A x1(Support Memeory viewer), USB-B x1(Display), RJ 45 x1
Output Terminals	VGA x1, Audio out (mini-jack,3.5mm) x1
Other Terminals	RS-232x1, RJ45 x1(control), USB-Bx1(for up-grade), HDBaseT(Optional)
Other Function	
Keystone Correction	V: ±30°(auto+manual), H: ±30°(manual), Pincushion/Barrel Correction, 4 Corner Keystone, 6 Corner Geometry correction, Grid image tune
Auto Setup	INPUT SEARCH, AUTO PC Adjustment, AUTO Keystone
Picture mode	Dynamic · Standard · Cinema · Blackboard · Colorboard · sim-DICOM
Suspend	Yes (5minutes no signal as default)
Cooling time	0s,Normal, 60s
Closed Caption	Yes
Signal Power On	Yes
Auto Ceiling	Yes
D-Zoom	1~33
360 degree projection	Yes
Dimension&Weight	
Net. Weight(KG)	7.7 kg
Max Dimensions(WxHxDmm)	405(W) x 358(D) x 136(H) mm
Standard Accessories	
Standard	Power cord, VGA cable, Remote control, Service Card, QSG(for Projector)

*specification subject to change without notice.

Projection distance *All measurements are approximate and may vary from the actual sizes.

Model	Projection Screen Size			16:10 aspect ration	
	Screen Size (inch)	Width (H/m)	Height (B1+B2/m)	Wide (m)	Tele (m)
VE600W	70	1.508	0.942	1.871	3.132
	80	1.723	1.077	2.144	3.585
	100	2.154	1.346	2.690	4.491
	150	3.231	2.019	4.055	6.756
	200	4.308	2.692	5.419	9.022
	300	6.462	4.039	8.148	13.552



VE600W



High Brightness Projector

7000lm brightness output, lens shift, 20,000hrs life time of laser light source can provide professional installation in large rooms, auditoriums and museums and reduce maintenance fee.

- High Brightness 7,000 Lumens
- Supports 4K Signal Input
- Powerful Geometry Correction
- 1.6x Zoom Lens and Lens Shift Function
- 5,000,000:1 High Contrast
- 360 Degree Projection
- HDBaseT Support(Optional)
- Up to 20,000 Hours Light-source Lifetime

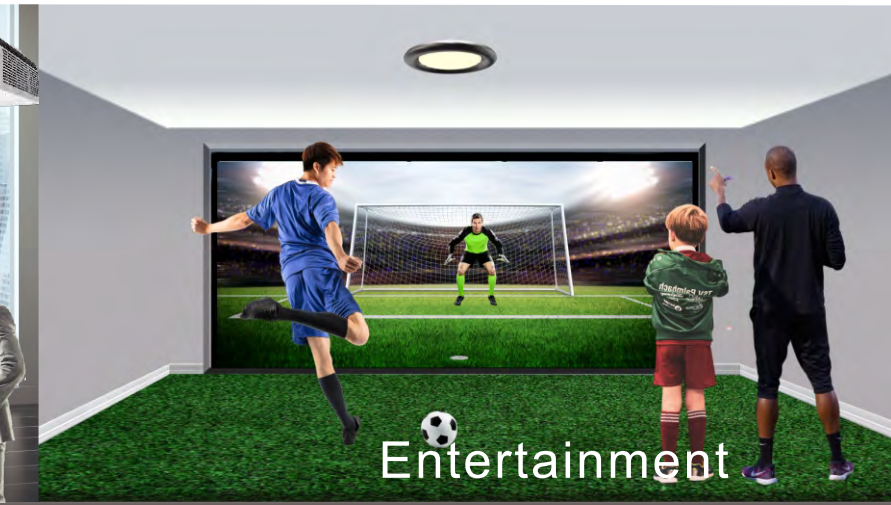




Education



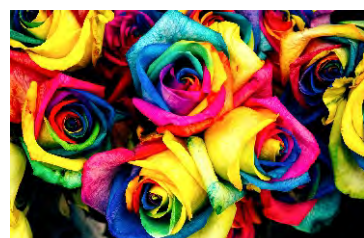
Business



Entertainment

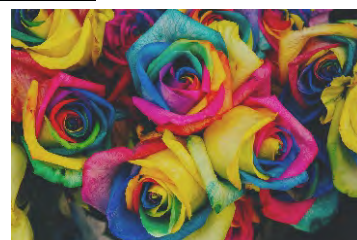
High Brightness, Rich Color and Vivid Images

Adopting 3LCD technology and laser light source, brightness output reaches to 7000 lumens and 5,000,000:1 contrast. Install this projector indoors in large space to still keep the screen full of rich color performance and vibrant image.



5,000,000:1 High Contrast

Low Contrast



20,000 Hours without change Light Source

Laser light source design can up to 20,000 hours operation time without light source replacement to reduce maintenance effort and give customer user-friendly feeling.

Light source has Normal, ECO1, ECO2 modes be adjusted by the ambient light to save energy.

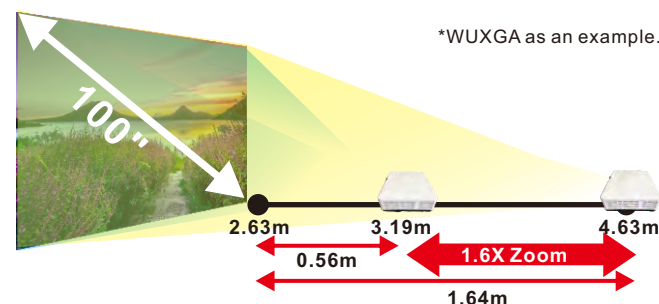


Energy saving



Large Zoom Lens and Lens Shift

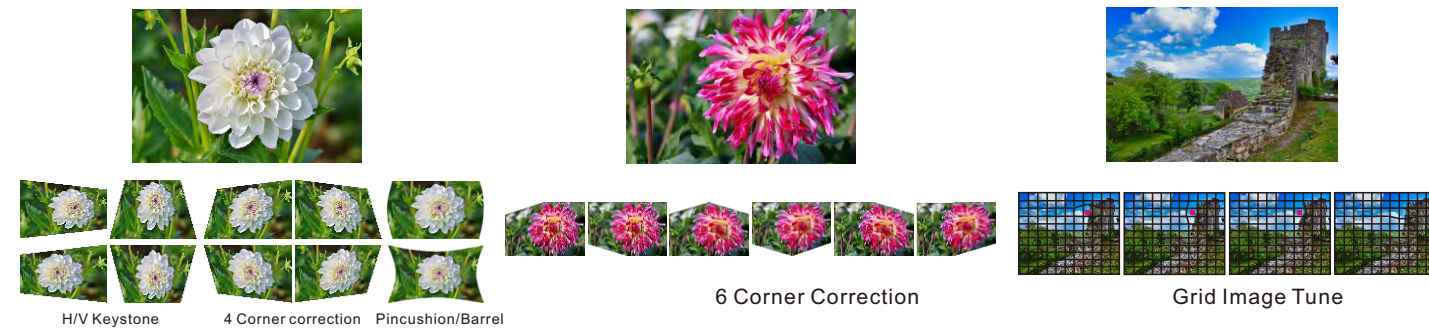
It adopts a 1.6x ratio large zoom lens, and approximate +/-25% horizontal and +50%~60% vertical lens shift, which is suitable for a variety of installation environments.



Lens shift range

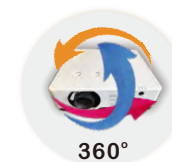
Powerful Geometry Correction

In addition to the conventional Vertical and Horizontal keystone correction, we still provide 4 Corner keystone, Pincushion, Barrel Correction, 6 Corner Correction and Grid Image for installer to install on spheres, cylinders, and many more non-standard surfaces.



360 Degree Projection

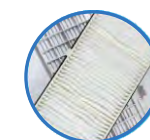
Any tilt-free, roll-free and portrait can be installed at any angle universally. Under the freeform (360-degree) projection the projector can be set up to point up or down depending on the installation environments and can be installed on its side to create a portrait image.



Superior Dust Proof Design

High efficiency ESD filter can make sure projector under the clean situation operation to extend the projector life and ensure the image quality.

Projector built-in an auto-detected system, always checks the projector's air volume, and automatically detects whether the filter is blocked. It can actively give the alarm to clean up the filter message to protect the machine and improve the service life.

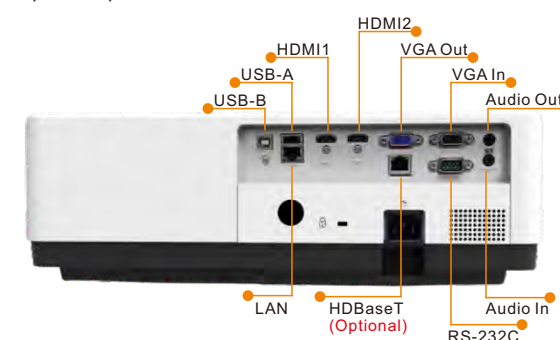


Quick release filter Make it easy to install



Multiple Interface

Equipped with a wide range of terminals, such as HDMI x 2, VGA, USB-A.



HDBaseT Support(Optional)

In order to facilitate long-distance installation in large venues, use RJ45 network cables (Cat. 5/Cat.6) can transmit 1080p signals up to 100 meters, which is easier to reach than traditional HDMI cables.

